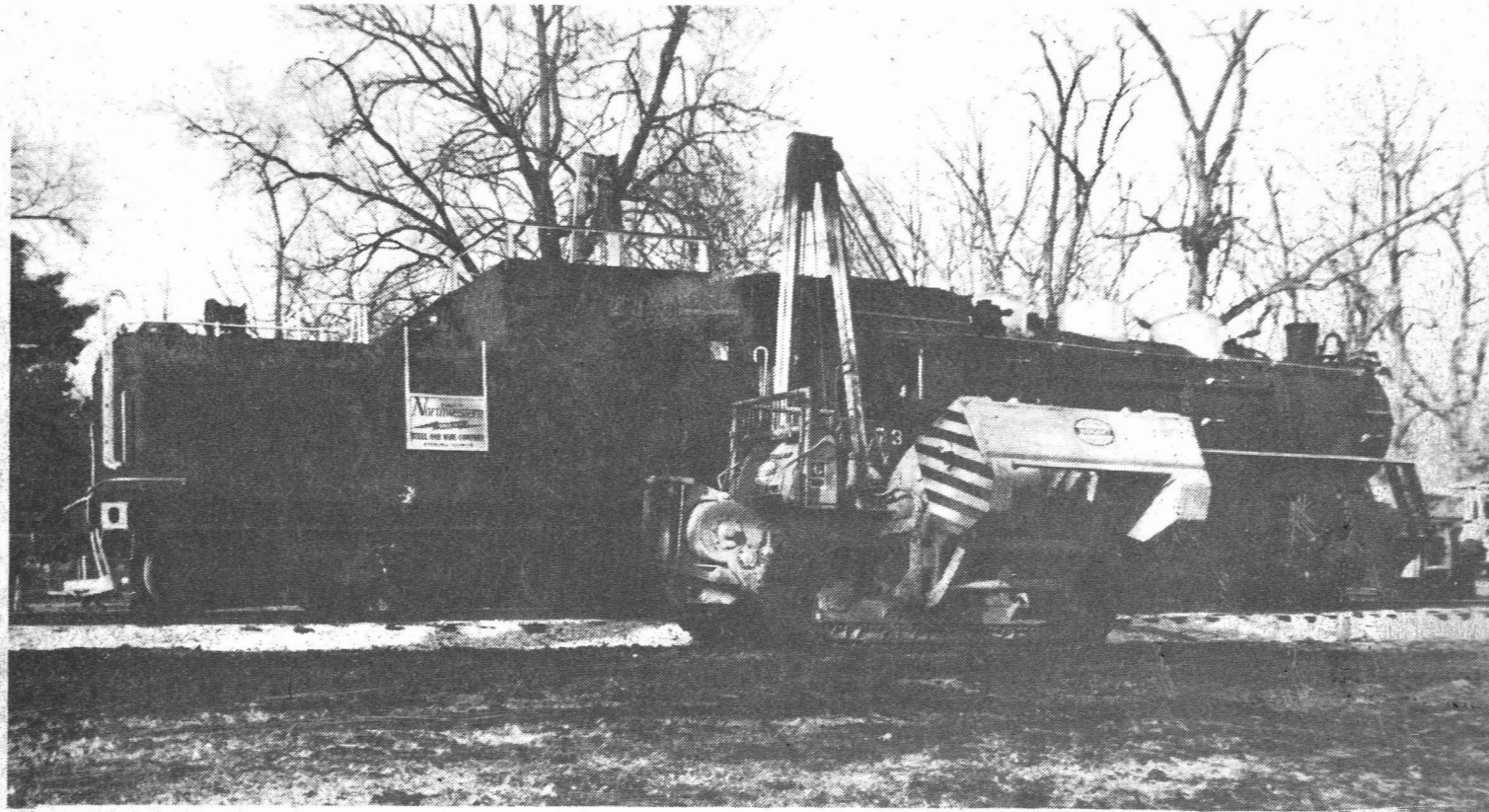


# NS&W's Old Steam Engine No. 73 Reaches The End Of The Line



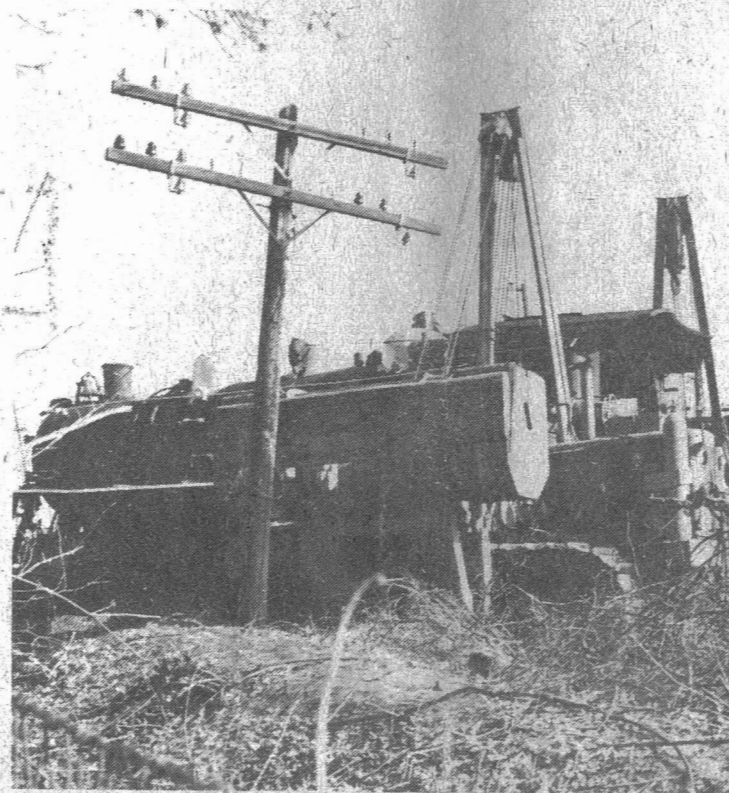
Lasting Monument To An Era In History



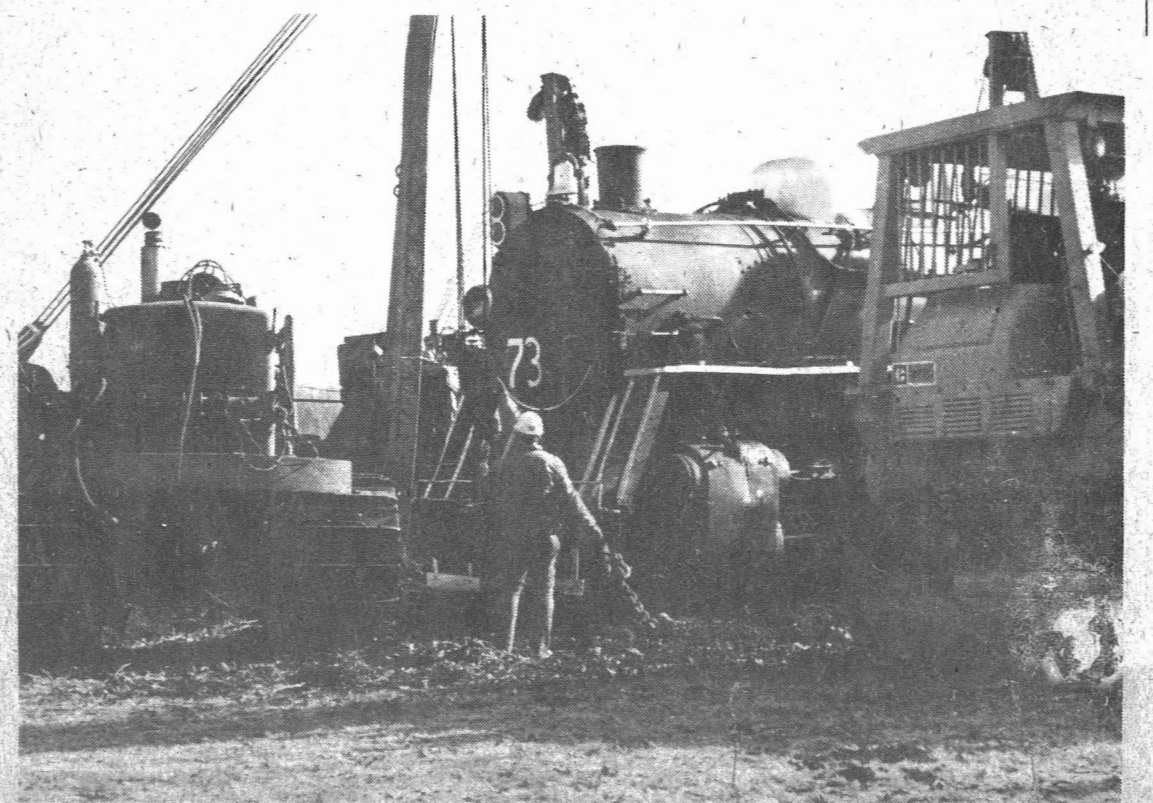
A Field Day For spectators



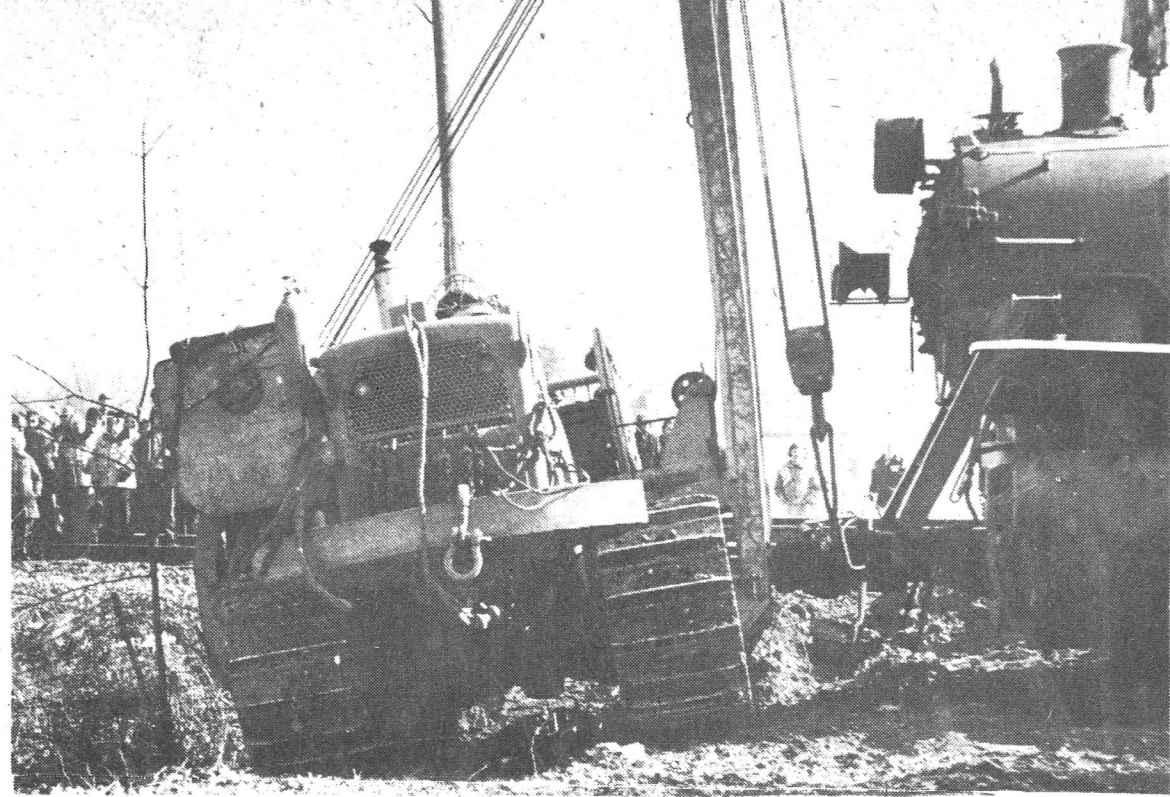
Rail Alignment At Rail's End



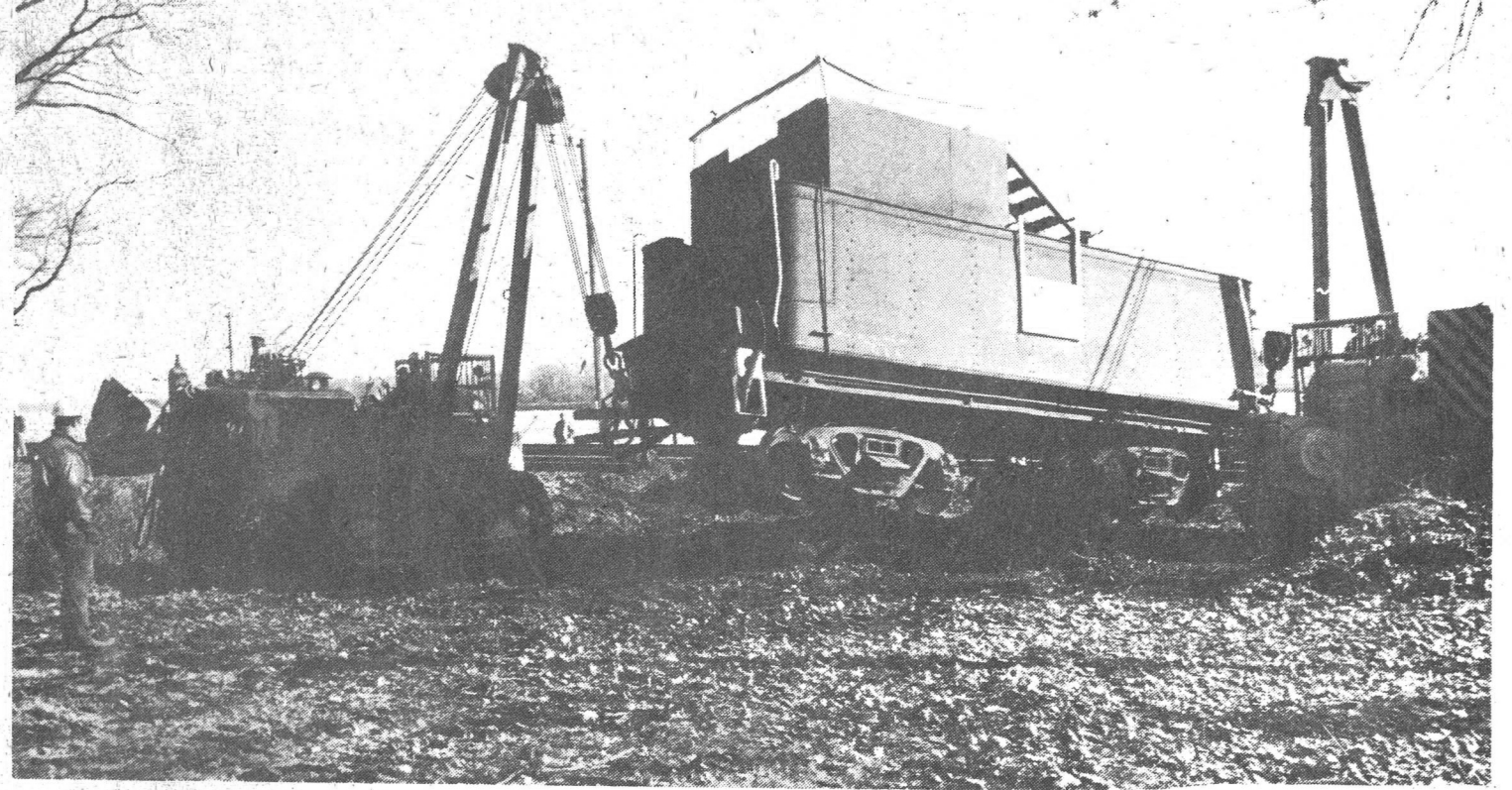
Powerful Hoists Begin The Lift



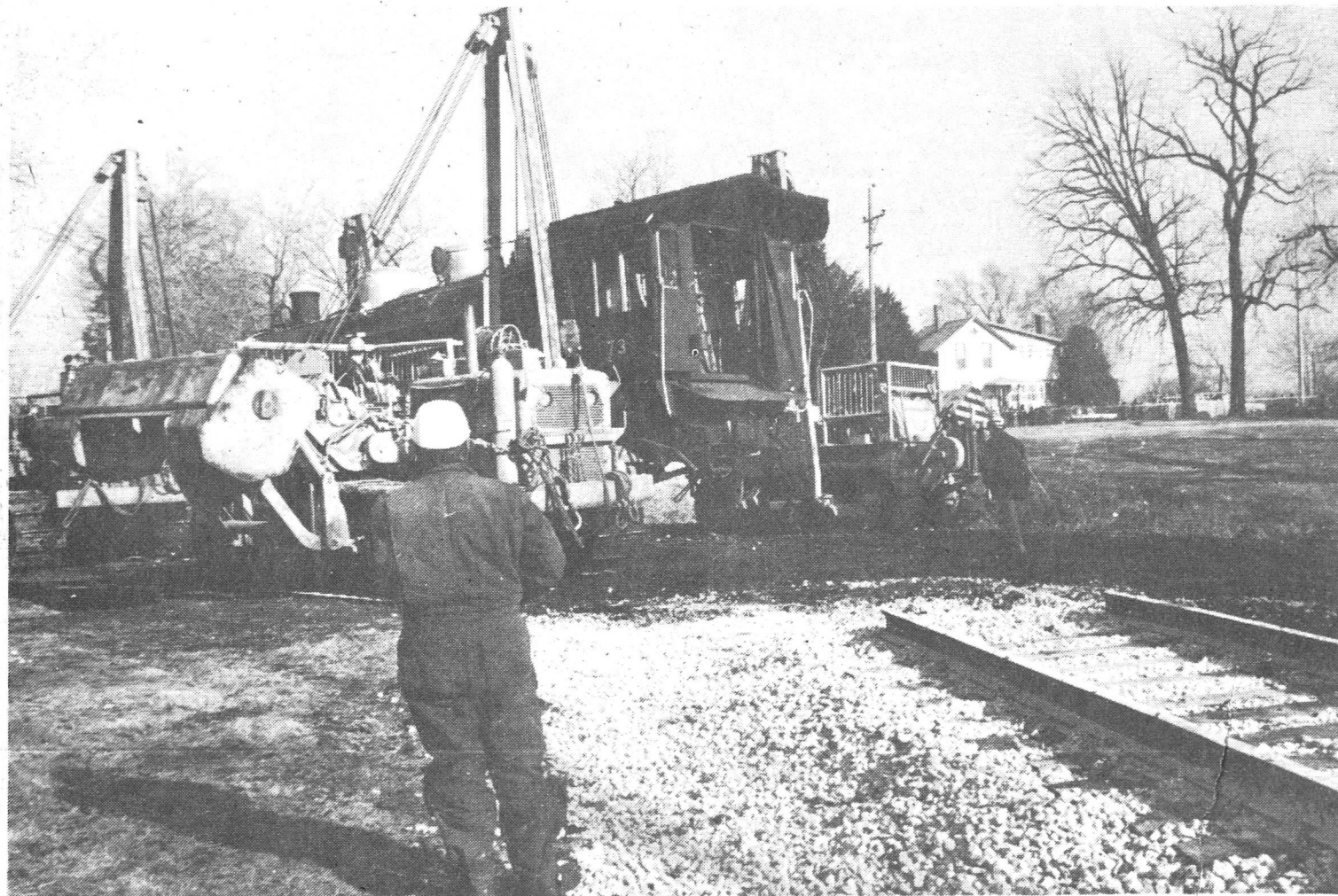
Getting The Chains In Place



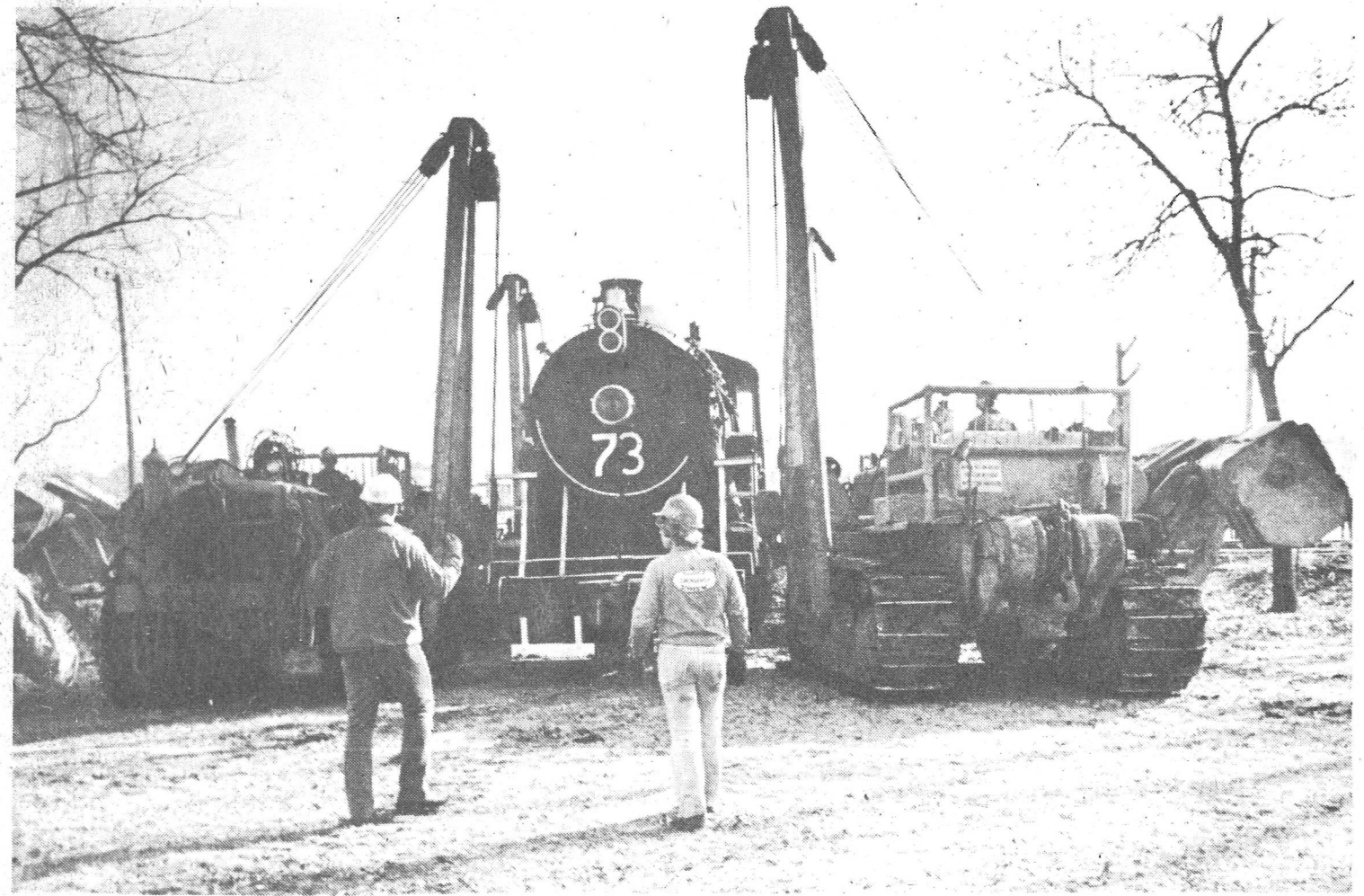
Soft Ground Yields To Sheer Weight



Up And Away For The Tender



Arrival At P. W. Dillon Historical Site



En Route To The End Of The Line

Gazette Photos By Brian Hurley